

**Powerful  
Dedicated  
Servers**

Our dedicated servers offer outstanding performance for even the most demanding of websites with the latest Intel & Dell technology combining unparalleled server specification, bandwidth and service with a low monthly fee.

- ✓ Install any software you want
  - ✓ No shared resources
  - ✓ Host multiple websites
- ✓ Linux or Windows OS
  - ✓ Your own IP address (x2)
  - ✓ Full root access

## Comparison table

Choose from our Dual Core and Quad Core dedicated servers. Both come with unlimited bandwidth and your choice of either Linux or Windows operating systems.

Server Processor	Dual Core 2.33Ghz	Quad Core 2.5Ghz
Operating System	Windows or Linux	Windows or Linux
Server Memory (RAM)	2GB	4GB
Unlimited Bandwidth	✓	✓
Server Hard Drive	2x160GB SATA	2x250GB SATA
Hardware RAID	✓	✓
Remote Server Reboot	✓	✓
Root System Access	✓	✓
IP Addresses	2 Free	2 Free
Bandwidth graphs & reporting	✓	✓
cPanel & WHM	Option	Option
Server back ups	Option	Option
<b>Linux Server features</b>	✓	✓
Operating System	CentOS	CentOS
Web Based Admin	WebMin or cPanel (option)	WebMin or cPanel (option)
Web Server	Apache	Apache
Mail Server	Exim	Exim
FTP Server	Pro FTP	Pro FTP
Database	MySQL	MySQL
Programming languages	PHP, Perl & Python	PHP, Perl & Python
<b>Windows Server features</b>		
Operating System	Windows Web Server 2008 R2	Windows Web Server 2008 R2
Web Server	IIS 7	IIS 7
Mail Server	Mail Enable	Mail Enable
FTP Server	Microsoft FTP	Microsoft FTP
Database	MS SQL Express or add MS SQL 2008 as an option	MS SQL Express or add MS SQL 2008 as an option
Programming languages	ASP, ASP.net, .NET Framework	ASP, ASP.net, .NET Framework

# The control panel

Our control panel makes managing your Dedicated Server a breeze. Some of the features we provide are...



## Server Reboot

You can reboot your server any time you like. Just visit the “Manage Dedicated Servers” area of your control panel and click the real time reboot option. This will perform a hardware reboot (power cycle the server).

You should always try and do a proper software reboot if you can, but if you do need to perform a hardware reboot then you are in complete control of this feature 24x7x365.



## Add IP Addresses

We setup one IP address as standard and you can add another for free by clicking the option in the “Manage Dedicated Servers” area of your control panel. If you need more IP addresses after that you can buy these for £12 each per year.



## Bandwidth Graphs

We automatically graph your servers traffic usage so that you can see how busy your server is.



## Custom Work

Sometimes you might need some help with some system or application level problems on your server. Or you might need some new software installing.

If you would like us to carry out system administration tasks on your server then we can provide you with a quote for the work you require.

# Data centre

Cutting edge technology puts you in front of the competition



## Power Supply & Backup

Each rack has two independent power feeds, fed from two diverse connections to the national grid.

Should one or both of these feeds fail 4 x 300kVA Riello UPS (N+1) battery backup systems will cover immediate power requirements. All power to the cabinets is supplied via the UPS to maintain clean supply to the servers.

If mains power is not restored within 10 seconds 3 x N+1 diesel powered generators will start providing full continuous power to the data centre.

Spare fuel for the generators is stored on-site and contracts are in place with fuel companies to deliver continuous emergency fuel for a virtually unlimited amount of time.



### **Fire Suppression**

Fire protection is provided by the FM200 Fire Suppression System which fills the sealed data centre with gas to extinguish any fire quickly without the use of water and without damage to any equipment.



### **Climate Control**

The data centre is fully climate controlled with N+1 Stultz DX Cybercool Air Conditioning Systems. The system monitors and controls the temperature and humidity levels.

Drip sensors located below floor monitor for any leaks in the system. Cold air is forced underneath raised flooring into the bottom of each server rack, and vacuumed out of the top providing maximum cooling efficiency. The position of each server rack/apparatus is calculated by a dedicated deployment team to further optimise cooling efficiency.



### **Server Cabinets**

46u high 1500mm wide x 1000mm deep, cable management system and 80% mesh doors. Cabinets are kept locked at all times.



### **CCTV**

The data centre is monitored by cctv both externally and internally. All CCTV images are recorded and stored for 3 months.



### **Secure Fence**

The building is surrounded by a 8ft perimeter fence. Gates are locked outside of normal business hours.



### **Secure Fob Access**

There are two locking doors to go through for access to each of the separate data halls within DC2. These are locked and can only be opened using Secure Fobs which are only held by named staff.

## **Our technology**

Cutting edge technology puts you in front of the competition



### **100% Dell Servers**

We use only Dell servers in our Dedicated Server platform.

All our Dedicated Servers utilise RAID 1 disk mirroring so either of your two disks can fail without impacting your website.

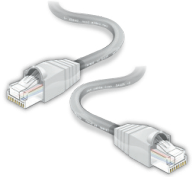
## 100% Cisco Gigabit Network

Our network operates on industry-leading network equipment from Cisco Systems. All our switches and routers are developed by Cisco. Our network is based on 10 gigabit technology, which means that it runs at a speed of 10000 Mb per second - most web hosting networks are limited to much less.



Our network also utilises 100% CAT6 network cable, which contains four pairs of copper wire and, unlike CAT5, utilises all four pairs. CAT6 supports Gigabit (1000 Mbps) Ethernet and supports communications at more than twice the speed of CAT5e, which is the other popular standard for Gigabit Ethernet cabling.

## Connectivity

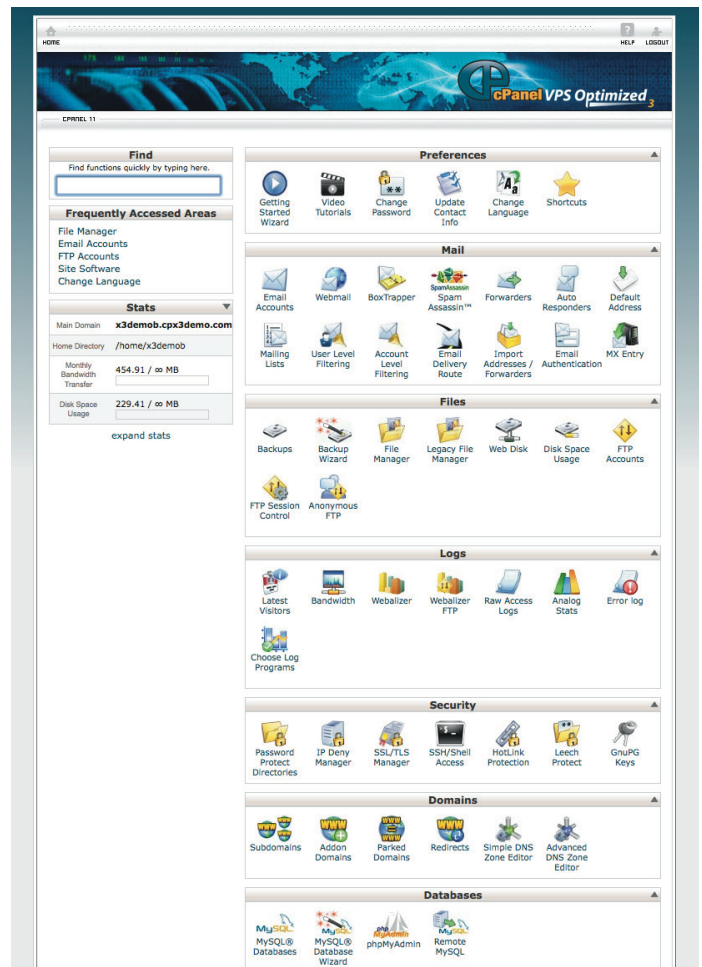


We operate a multi-homed network utilising BGP4 technology. Simply put, we have multiple connections to the Internet with different backbone providers, should any connection fail our other connections automatically take all the traffic. Not only does this mean that we are very unlikely to lose connectivity to the Internet, but it also means that traffic moving to and from our network can choose from a range of paths to get to its final destination. This means that we have been able to configure the network always to take the fastest paths.

## cPanel & WHM manager

cPanel and WHM 11 is the number 1 choice for dedicated server web hosting administration. With tools to keep your server secure, provision customer accounts, transfer accounts from server to server, deploy applications (blogs, cms, etc) and much more, your web hosting operation will jump to light speed with cPanel and WHM 11.

- cPanel & WHM Features
- Complete Server Administration Interface
- Unlimited Domains per Server
- Fully Brandable
- Fully Featured Domain Owner Interface
- Separate Server Administrator, Reseller and Domain Owner Interfaces
- Free Multi-Language Support
- Free Virus Scanner
- Free Game Servers



# FAQs

## **What type of hardware do you use?**

All our servers are genuine Dell Servers. If you are comparing us to other providers please be aware that many companies make “homemade” servers using home computer motherboards in fabricated boxes.

## **What level of access do I have to my server?**

You will have full root or administrator privileges to manage and access your server.

## **Is there any software installed on the server to help me configure it?**

Yes, if you have chosen our Linux CentOS installation then we automatically install WebMin. WebMin is a web based control panel that allows you to do system administration tasks such as configure Apache or setup users. If you want the easiest management possible then we would suggest you add cPanel to your server.

## **I need to reboot my server, how can I arrange this?**

You can reboot your server any time you like. Just visit the “Manage Dedicated Servers” area of your control panel and click the real time reboot option.

## **How much bandwidth do I get?**

Your server comes with a 10mb connection to the Internet (10240 Kbps), It’s just like having your own leased line. You can transfer as much data as you like within your 10mb line. Don’t get this confused with your broadband at home or work; you don’t share your 10mb with anyone else. 10mb is a huge amount of bandwidth which can support a very busy website, it roughly translates to 2560 GB of bandwidth a month.

## **Do you have any restrictions on what I can use my server for?**

No, as long as anything you do on the server abides with UK law then you are free to use the server for any purpose.

## **Can I use my server to host videos, stream audio or store large backups?**

Yes, you can use your server for any purpose you need.

## **Where will my server be located?**

Your server will be based in our UK Data Centre.

## **Does the server run RAID disk mirroring?**

Yes, all our servers are setup with hardware level RAID mirroring. In the unlikely event of a disk failure this means your server will continue to operate normally. We will be notified of the disk failure and will replace the broken disk for you with no cost or impact to your data or service.